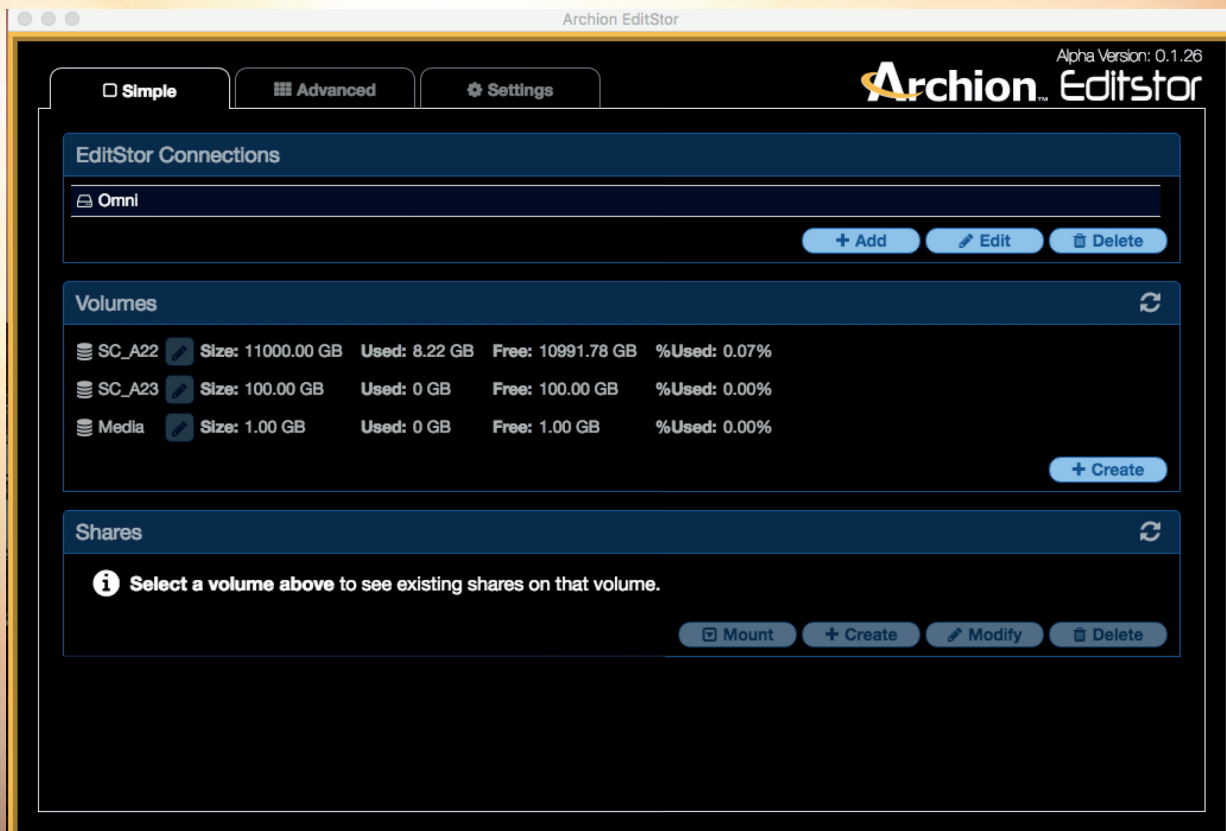




# APS+ MANUAL



## Disclaimers

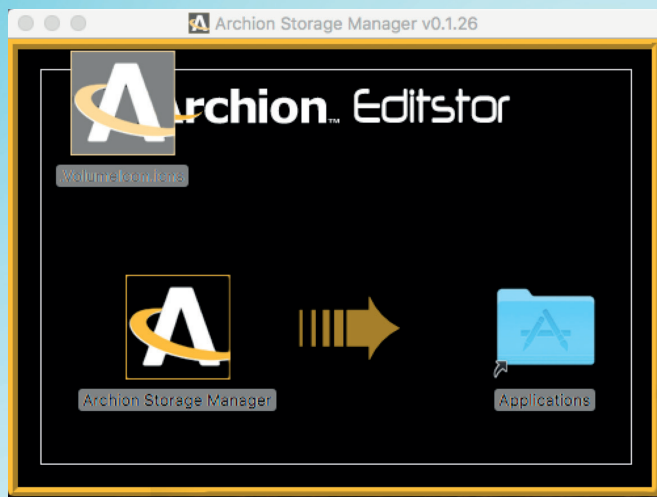
ARCHION TECHNOLOGIES MAKES NO WARRANTIES, EXPRESSED OR IMPLIED, STATUTORY OR OTHERWISE, WITH RESPECT TO THE PRODUCTS, INCLUDING, WITHOUT LIMITATION, ANY IMPLIED WARRANTY OF MERCHANTABILITY OR FITNESS FOR A PARTICULAR PURPOSE. IN NO EVENT WILL ARCHION BE FINANCIALLY/LEGALLY RESPONSIBLE TO THE CUSTOMER OR ANY OTHER PERSON OR ENTITY, WHETHER CONTRACT TORT OR ANY OTHER BASIS FOR ANY ISSUES THAT MAY ARISE IN THE COMPANY'S TECHNOLOGY SYSTEM THAT OCCUR DURING OR AFTER ALL SERVICES RENDERED BY ARCHION REPRESENTATIVES AND ITS SUPPLIERS, UNLESS EVIDENCE IS PRESENT PROVING NEGLIGENCE ON BEHALF OF ARCHION. (DETERMINATION OF PROOF/EVIDENCE WILL BE EVALUATED BY ARCHION AND IF NEEDED, A THIRD PARTY LEGAL REPRESENTATIVE). EXCEPT FOR LIABILITY FOR DEATH OR PERSONAL INJURY CAUSED BY ARCHION'S NEGLIGENCE OR FRAUD, OR OTHER LIABILITY THAT CANNOT LAWFULLY BE EXCLUDED OR RESTRICTED. ARCHION AND ITS SUPPLIERS WILL NOT BE LIABLE FOR ANY DAMAGES, INCLUDING LOST PROFITS, DATA LOSS, BUSINESS DAMAGE, DAMAGES THAT ARE NOT REASONABLY FORESEEABLE, OR ANY OTHER LOSS OR DAMAGES INCLUDING CONSEQUENTIAL, SPECIAL, INDIRECT, OR INCIDENTAL DAMAGES ARISING OUT OF THE USE OR POSSESSION OF THE PRODUCTS BY THE CUSTOMER. PRODUCTS THAT HAVE BEEN DAMAGED THROUGH NEGLIGENCE, ACCIDENT, ABUSE, MISAPPLICATION, MODIFICATION, MISUSE OF THE PURCHASER OR ITS AGENTS OR DAMAGED THROUGH SERVICES, UPGRADES, CHANGE VERSION OR EXPANSIONS PERFORMED BY NOT AN ARCHION REPRESENTATIVE OR ARCHION AUTHORIZED SERVICE PROVIDER WILL BE, AT PURCHASER'S DISCRETION, REPLACED AT PURCHASER'S COST OR RETURNED TO PURCHASER UN-REPAIRED, FREIGHT COLLECT. ANY PARTS OR PRODUCT REPLACED UNDER THIS LIMITED WARRANTY WILL BECOME THE PROPERTY OF ARCHION.

USER SHALL NOT, WITHOUT PRIOR APPROVAL OF ARCHION, USE FOR USER'S OWN BENEFIT, PUBLISH, COPY, OR OTHERWISE DISCLOSE TO OTHERS, OR PERMIT THE USE BY OTHERS FOR THEIR BENEFIT OR THE DETRIMENT OF ARCHION, ANY CONFIDENTIAL INFORMATION. IN ADDITION, USER SHALL NOT OPEN, MODIFY, TRANSLATE THE UNIT, PERFORM REVERSE ENGINEERING, DECOMPILE, DISASSEMBLE OR OTHERWISE ATTEMPT TO DISCOVER THE SOURCE CODE, UNDERLYING IDEAS, UNDERLYING USER INTERFACE TECHNIQUES OR ALGORITHMS OF THE PRODUCT BY ANY MEANS WHATSOEVER, DIRECTLY OR INDIRECTLY, OR DISCLOSE ANY OF THE FOREGOING.

## Installing

Double-click the DMG file (Mac) or the exe file to launch the installer.

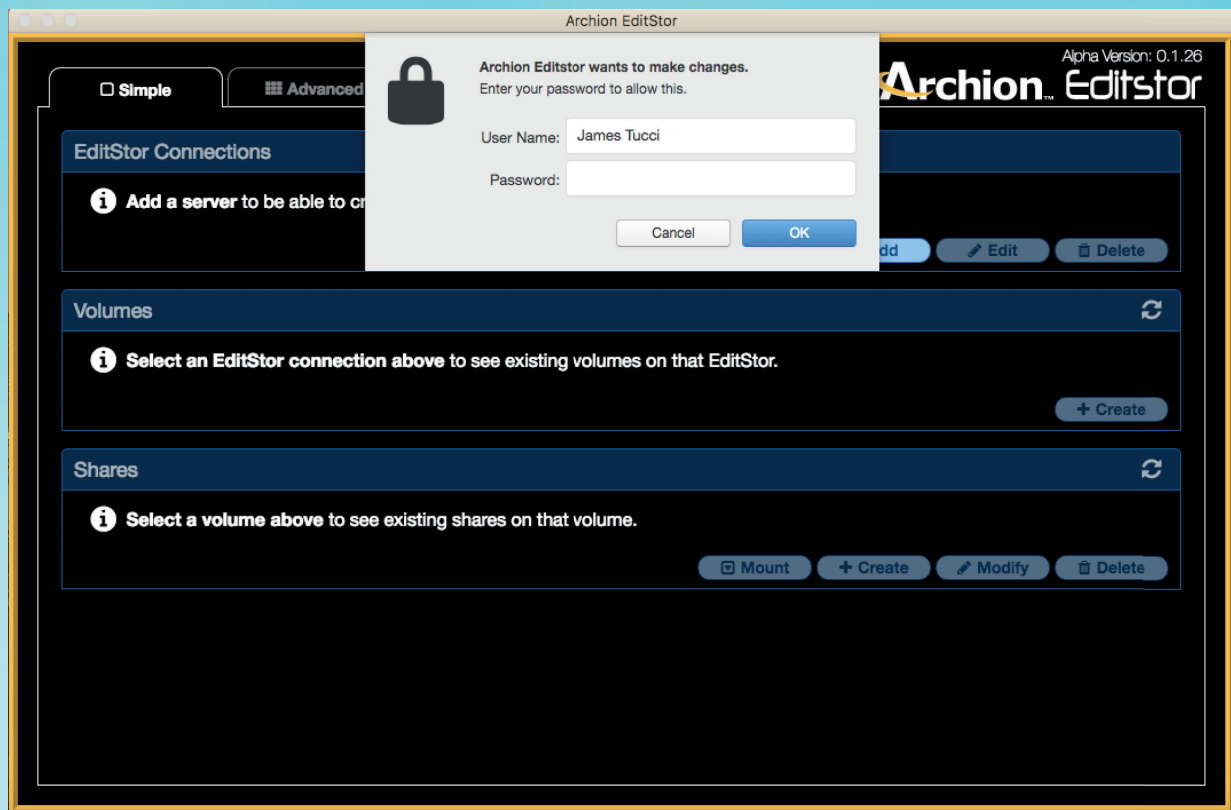
On Mac, install the Storage Manager app by dragging Archion badge into the applications folder, and onto the desktop.



Double-click the icon to launch the application.

On Windows, double-click the Archion APS+ installer to install APS+.

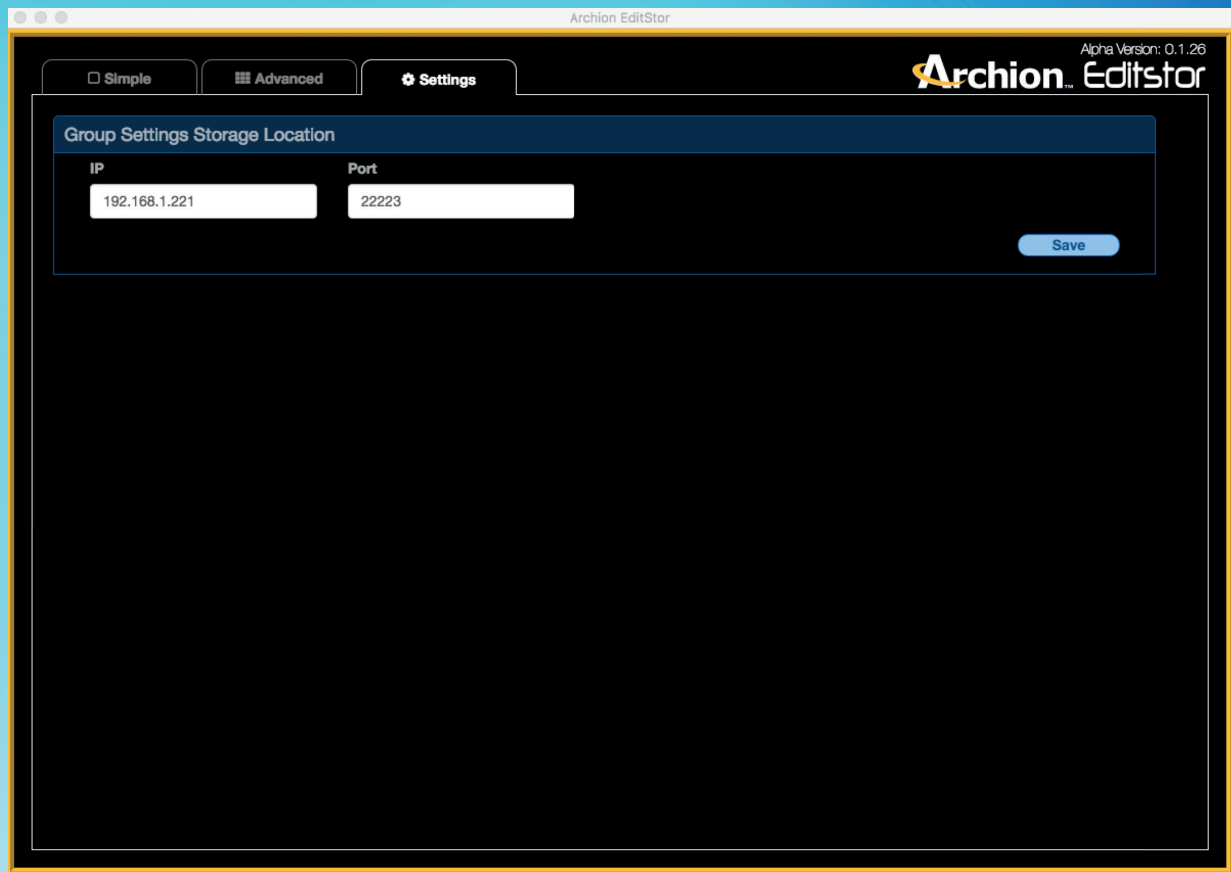




On Mac OS X 10.12 Sierra, the editor will need you to enter local credentials. This is the opening screen. Type your computer password in the "password" entry and click "OK." Then click the "Settings" tab to set up your new Editstor system.



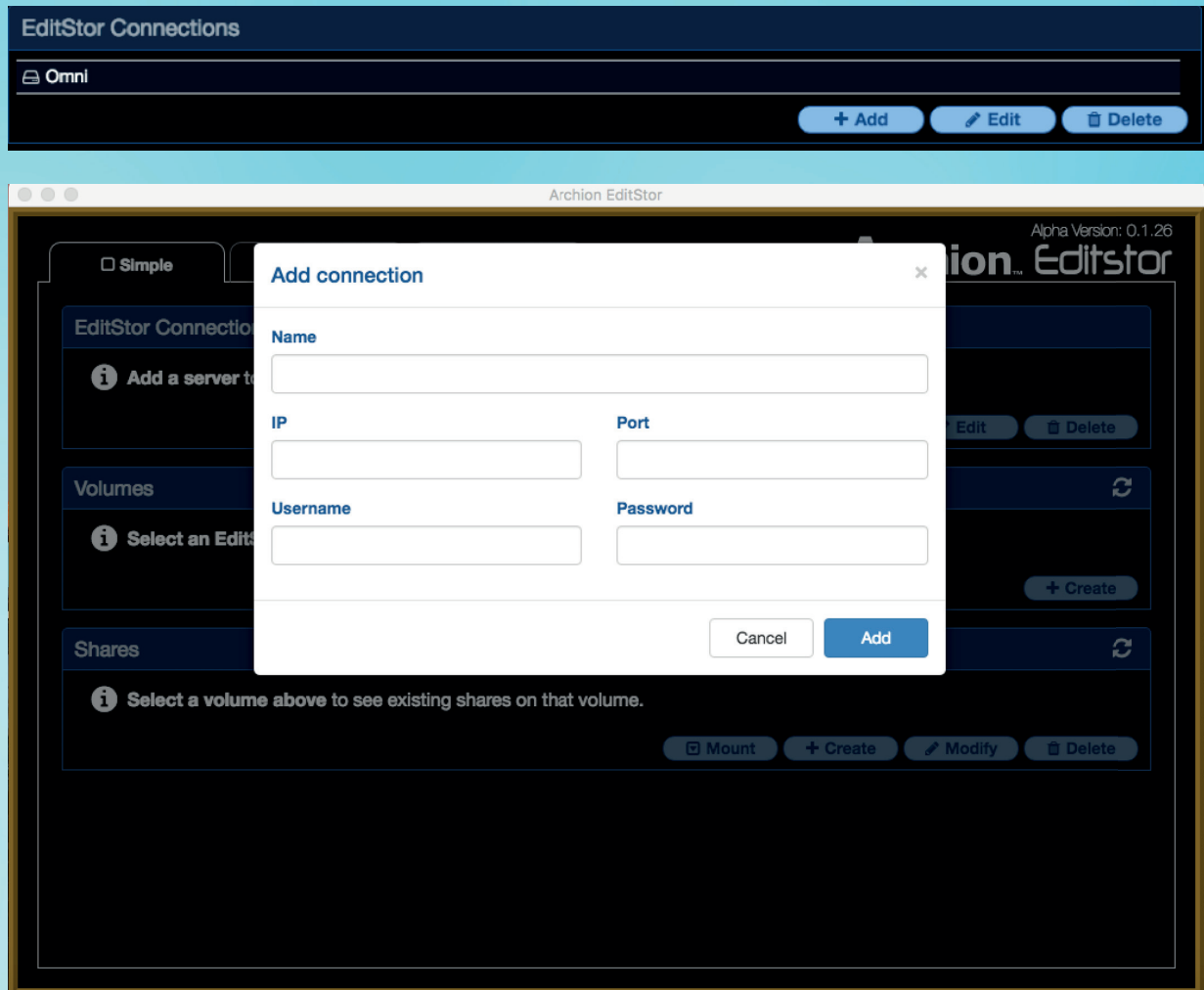




## Setting up your storage location

On the "Settings" tab, you'll find the Group Settings Storage Location panel, where you'll configure the group settings for your Editstor system. Type in the IP address for the Editstor system (for example, 192.168.1.220). Then type in the port setting (the standard port is 22223). Now click save. The system will create the storage volume and the shared drive, and create that drive's Group settings, where all the settings for Archion APS+ will be stored.

## The EditStor Connections Panel



### Adding a connection

After setting up your storage location, click on the “Simple” tab, then click “Add Connection” to set up a user-specific connection to your Editstor system.

On the “Add connection” dialog, enter the name of your system (this can be anything you want – for example, “Omni”).

Then type in the IP of the system, and the port (which is normally 22223). The default user name is “api” and the default password is “archion.” After entering all the necessary information, click “Add.” APS+ will now log the system in and set up its Group settings.

You can edit or delete any of the EditStor Storage you added in EditStor Connections.

## The Volume Panel

Volumes					
SC_A22	Size: 11000.00 GB	Used: 8.22 GB	Free: 10991.78 GB	%Used: 0.07%	
SC_A23	Size: 100.00 GB	Used: 0 GB	Free: 100.00 GB	%Used: 0.00%	
Media	Size: 1.00 GB	Used: 0 GB	Free: 1.00 GB	%Used: 0.00%	
					+ Create

Archion EditStor

Alpha Version: 0.1.26

Simple Advanced Settings

EditStor Connections

Omni

+ Add Edit Delete

Volumes

lv0000	Size: 11000.00 GB	Used: 8.22 GB	Free: 10991.78 GB	%Used: 0.07%
lv0001	Size: 100.00 GB	Used: 0 GB	Free: 100.00 GB	%Used: 0.00%
lv0002	Size: 1.00 GB	Used: 0 GB	Free: 1.00 GB	%Used: 0.00%

+ Create

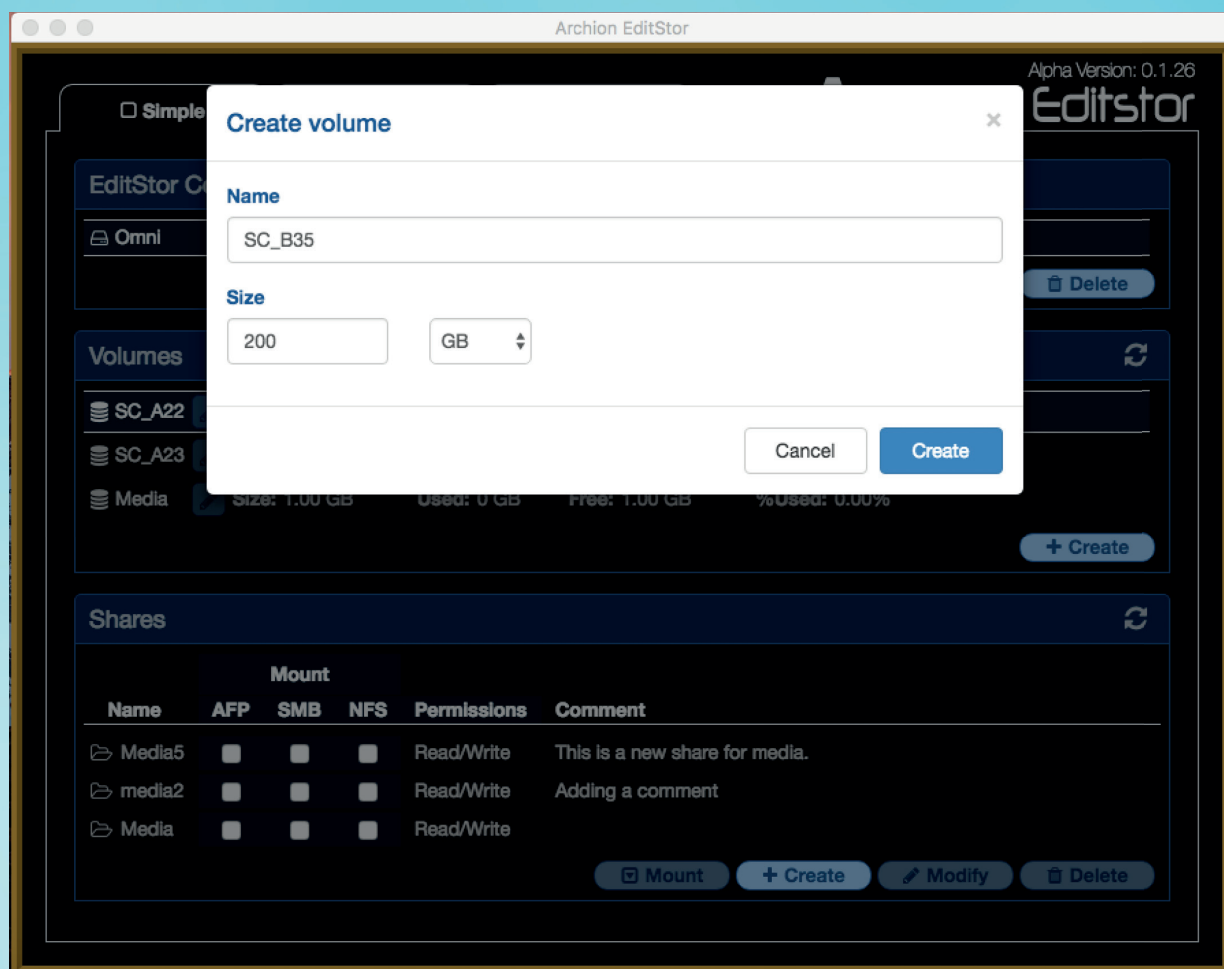
Shares

*Select a volume above to see existing shares on that volume.*

Mount + Create Modify Delete

APS+ will automatically find any logical volumes that are on the system, and display them in the Volumes panel, with default labels in the format "LV0000," "LV0001," etc.

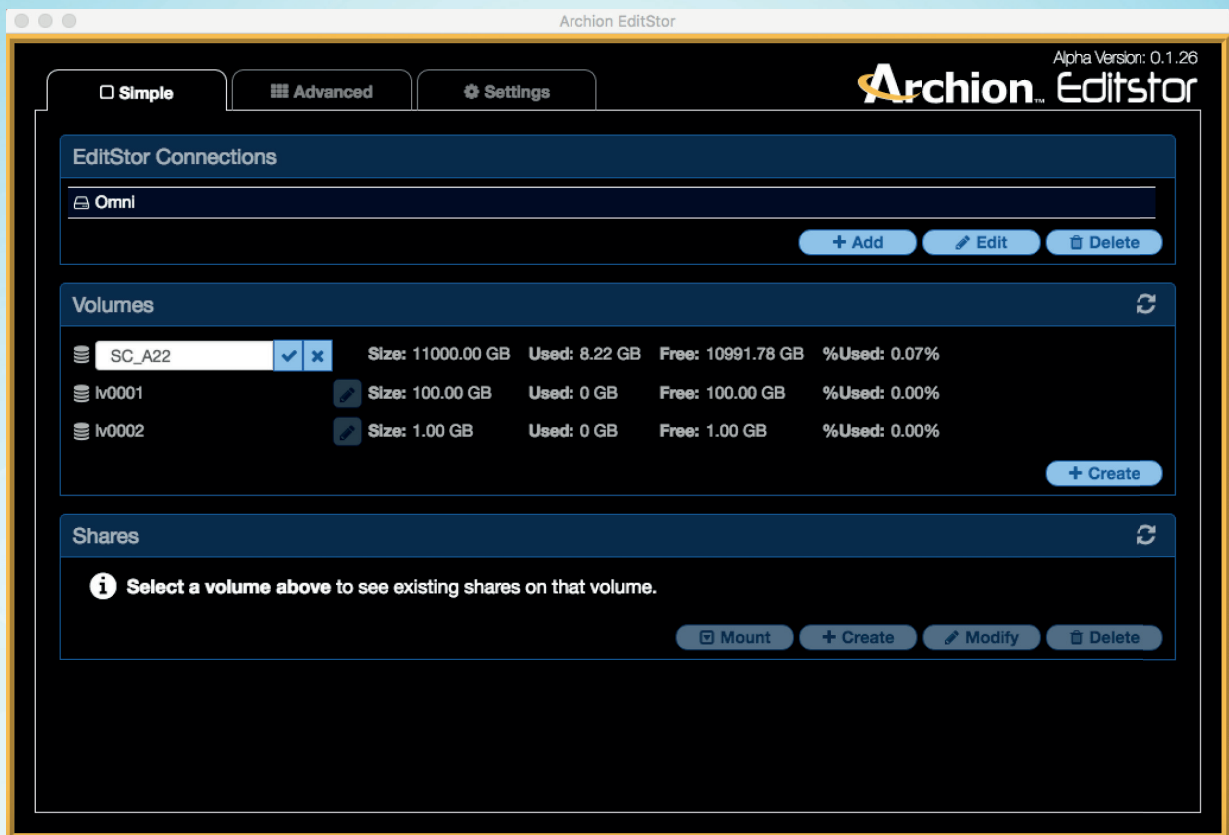
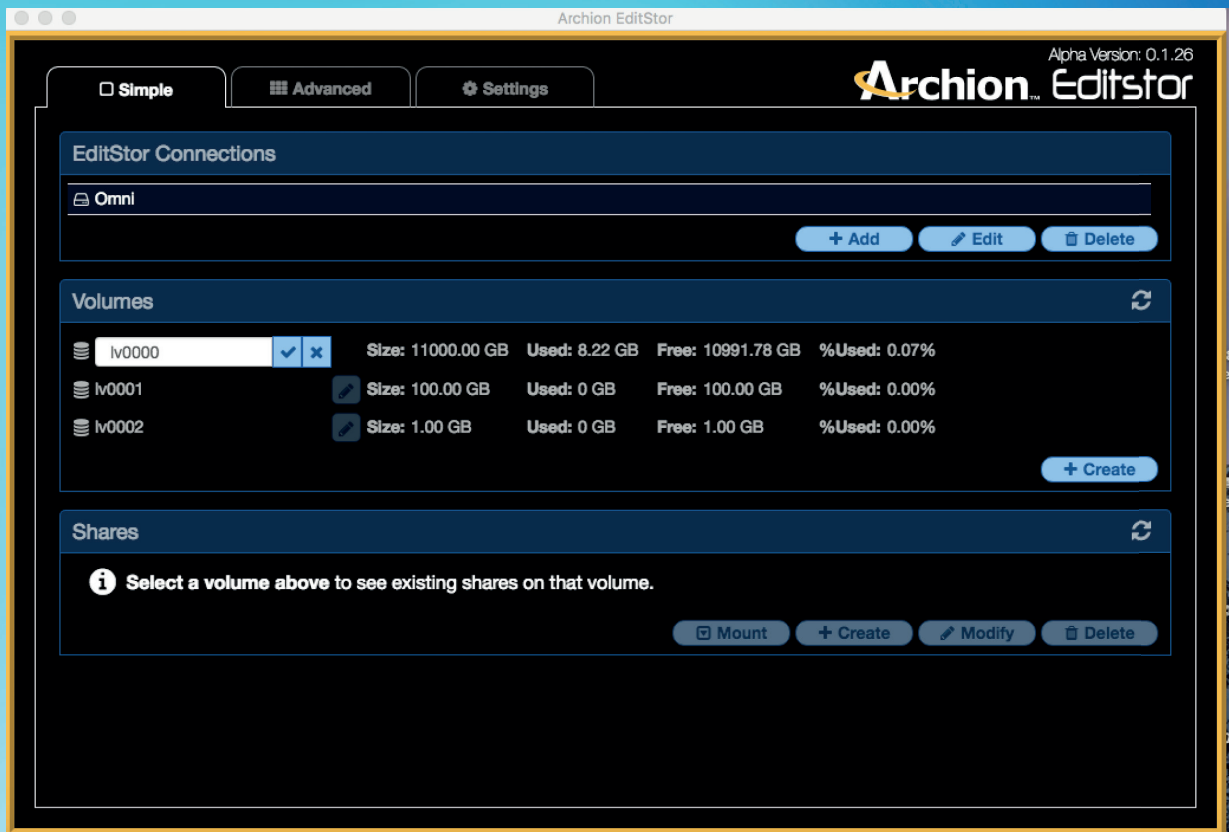


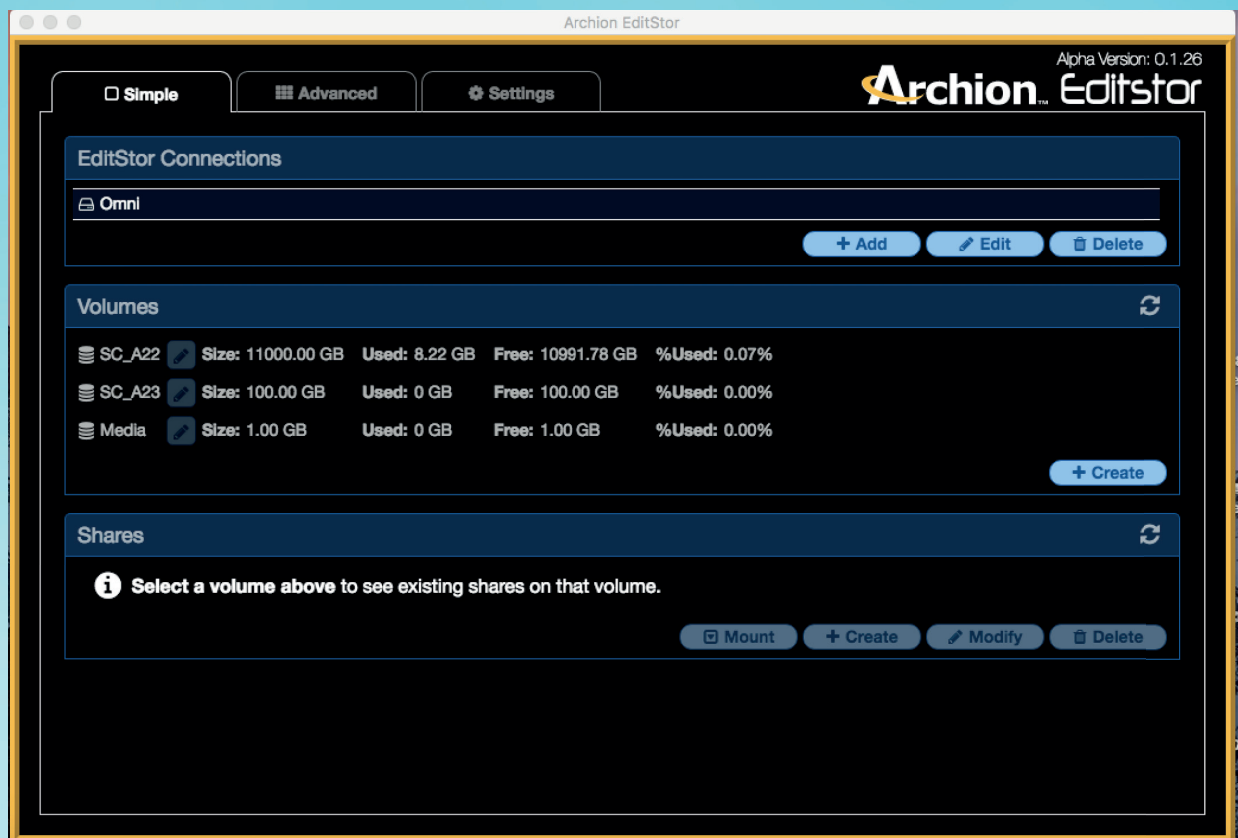


## Creating a logical volume

To create a logical volume, go to the volumes list and click "Create." A "Create volume" dialog will appear. Enter the name of the volume you want to create, along with the size of the storage you want to partition off. Click the "Create" button, and an analogical volume will be created and added to the Volumes list.

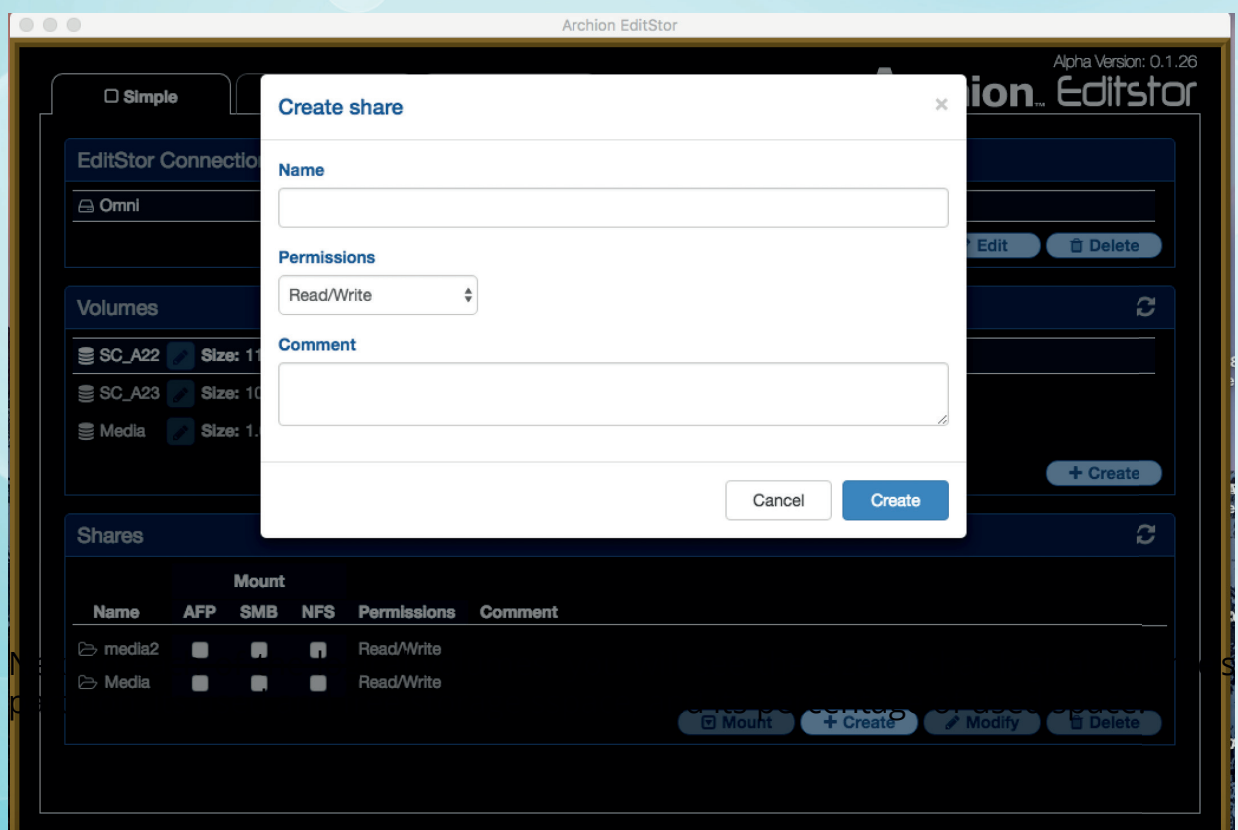
You can change the label of any volume by clicking on the pencil icon, typing the name you wish to label the volume (for example, "SC\_A22"), and clicking the checkbox next to the entry.





The “Create” button in the Volumes panel allows you to create shared drives within that volume’s workspace. Each share will have the same amount of storage as the workspace.

For example, you can create a share within the SC\_A22 workspace, and put all the scenes from A22 into that share.



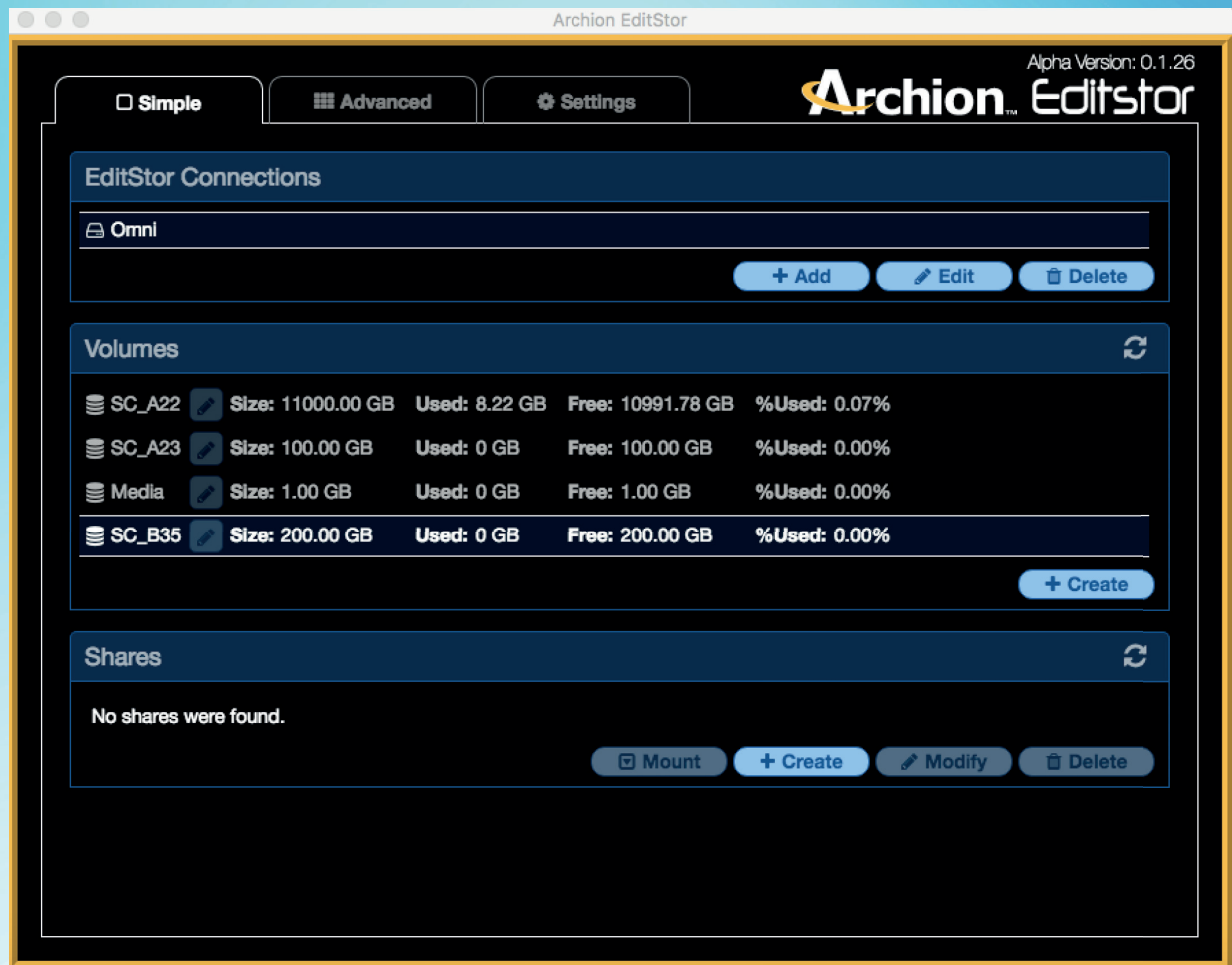


## Refresh button

Click the Refresh button on the Volumes panel to refresh the volume list.

When you click on any logical volume, the selected row will be highlighted with white bold letters.

## The Shares Panel



## Adding shares to a logical volume

As you can see, the new logical volume “SC\_B35” has no shares yet. To add shares to a logical volume, select that volume and click “Create” in the Shares panel, then enter the information for the new share.



Name	Mount			Permissions	Comment
	AFP	SMB	NFS		
media2	<input type="checkbox"/>	<input type="checkbox"/>	<input type="checkbox"/>	Read/Write	
Media	<input type="checkbox"/>	<input type="checkbox"/>	<input type="checkbox"/>	Read/Write	
Media5	<input type="checkbox"/>	<input type="checkbox"/>	<input type="checkbox"/>	Read/Write	This is a new share for media.

Mount + Create Modify Delete

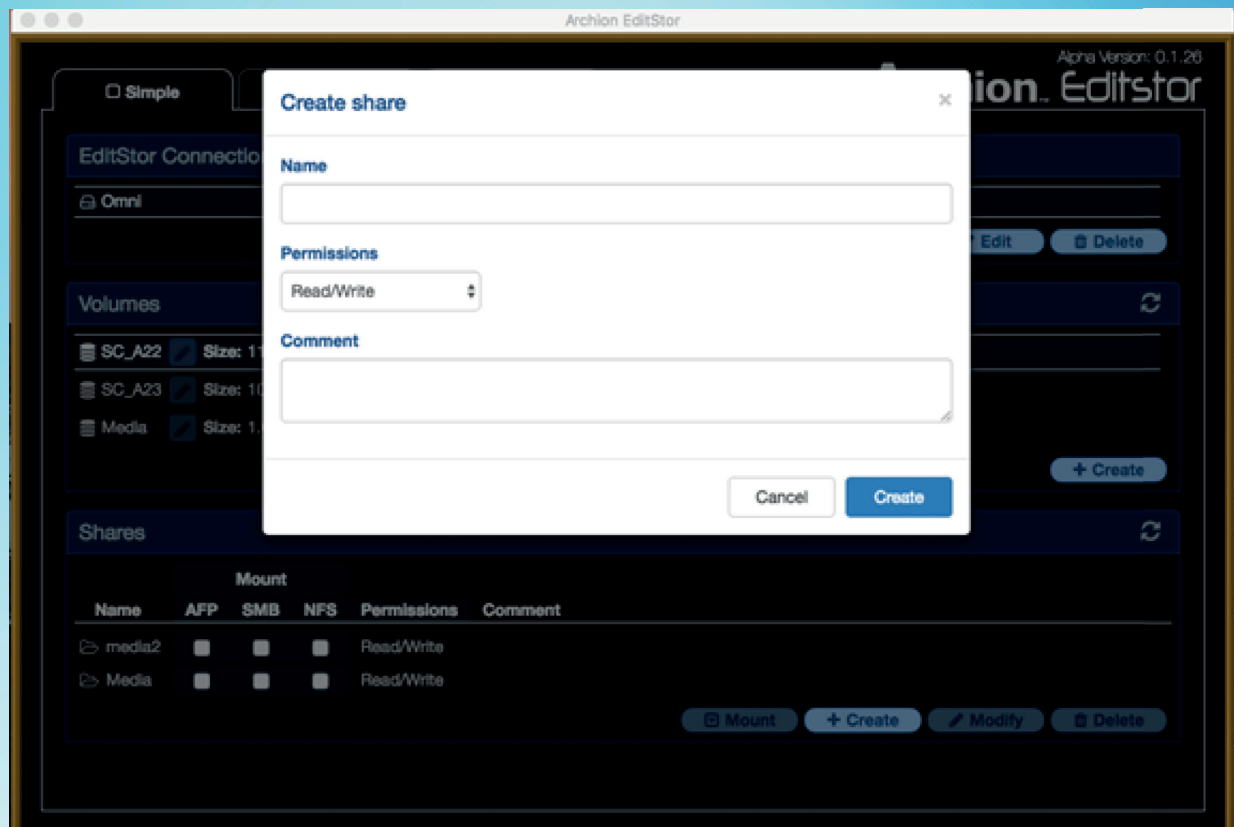
The Share Panel will show the list of shares for logical volume you select. Each share will show a list of network mounts. You can choose to mount the share, set its permissions, and add comments.

By clicking the buttons at the bottom of the Shares Panel, you can choose Mount, to mount a share; Create, to create a share; Modify, to modify a share; or Delete, to delete a share.

## Creating a share

To create a share, first select the volume in which you wish to create it. Then click the Create button, and a "Create share" dialog will appear. Under "Name," enter the name of the share. If you have any comments, enter them in the "Comment" section.

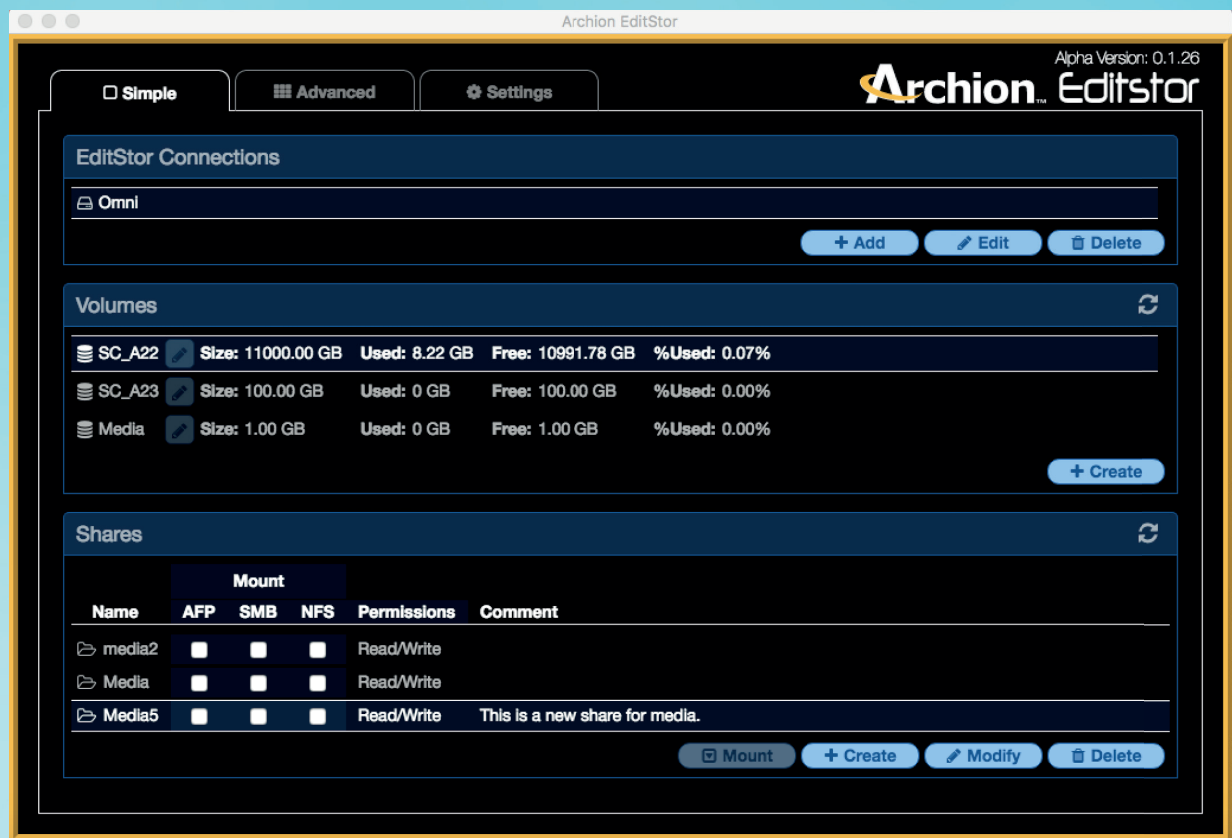
(Share names can't include special characters.)



Then click "Create" to create the share.

When the share is created, all network protocols: AFP, SMB, and NFS will be enabled for that share. Based on the Permission you choose, AFP and SMB will have Read/Write permissions, or Read only. NFS authentication is based on your computer's local credentials.





When you click on a share, its row will be highlighted in white bold letters.

In this screenshot, we've created a number of shares. These shares can each be mounted according to AFP, SMB, and/or NFS protocol.

## Modifying a share's properties

To modify a share's properties, simply click on the share to select it, then click "Modify." An "Edit share" dialog will appear. A share can be mounted with AFP, SMB, or NFS protocol. On this dialog, you can also modify a share – giving it read or write permissions, and entering new comments. Click "Save" when finished.

Archion EditStor

Alpha Version: 0.1.26

SimpleAdvancedSettings

EditStor Connections

Omni

+ AddEditDelete

Volumes

SC\_A22Size: 11000.00 GBUsed: 8.22 GBFree: 10991.78 GB%Used: 0.07%

SC\_A23Size: 100.00 GBUsed: 0 GBFree: 100.00 GB%Used: 0.00%

MediaSize: 1.00 GBUsed: 0 GBFree: 1.00 GB%Used: 0.00%

+ Create

Shares

Name	Mount			Permissions	Comment
	AFP	SMB	NFS		
media2	<input type="checkbox"/>	<input type="checkbox"/>	<input type="checkbox"/>	Read/Write	
Media	<input type="checkbox"/>	<input checked="" type="checkbox"/>	<input checked="" type="checkbox"/>	Read/Write	
Media5	<input checked="" type="checkbox"/>	<input type="checkbox"/>	<input type="checkbox"/>	Read/Write	This is a new share for media.

Mount+ CreateModifyDelete

Archion EditStor

Alpha Version: 0.1.26

SimpleAdvancedSettings

EditStor Connections

Omni

+ AddEditDelete

Volumes

SC\_A22Size: 11000.00 GBUsed: 8.22 GBFree: 10991.78 GB%Used: 0.07%

SC\_A23Size: 100.00 GBUsed: 0 GBFree: 100.00 GB%Used: 0.00%

MediaSize: 1.00 GBUsed: 0 GBFree: 1.00 GB%Used: 0.00%

+ Create

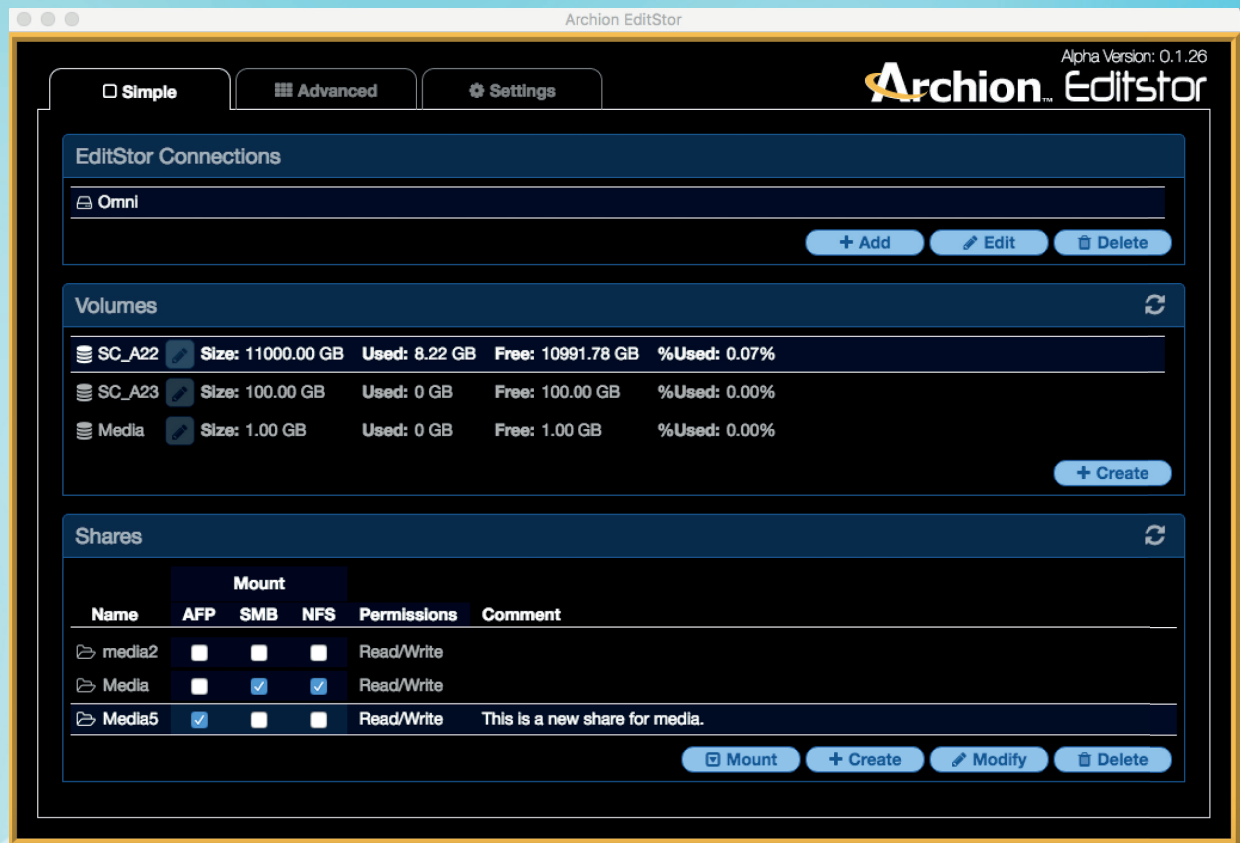
Shares

Name	Mount			Permissions	Comment
	AFP	SMB	NFS		
Media5	<input type="checkbox"/>	<input type="checkbox"/>	<input type="checkbox"/>	Read/Write	This is a new share for media.
media2	<input type="checkbox"/>	<input type="checkbox"/>	<input type="checkbox"/>	Read/Write	Adding a comment
Media	<input type="checkbox"/>	<input type="checkbox"/>	<input type="checkbox"/>	Read/Write	

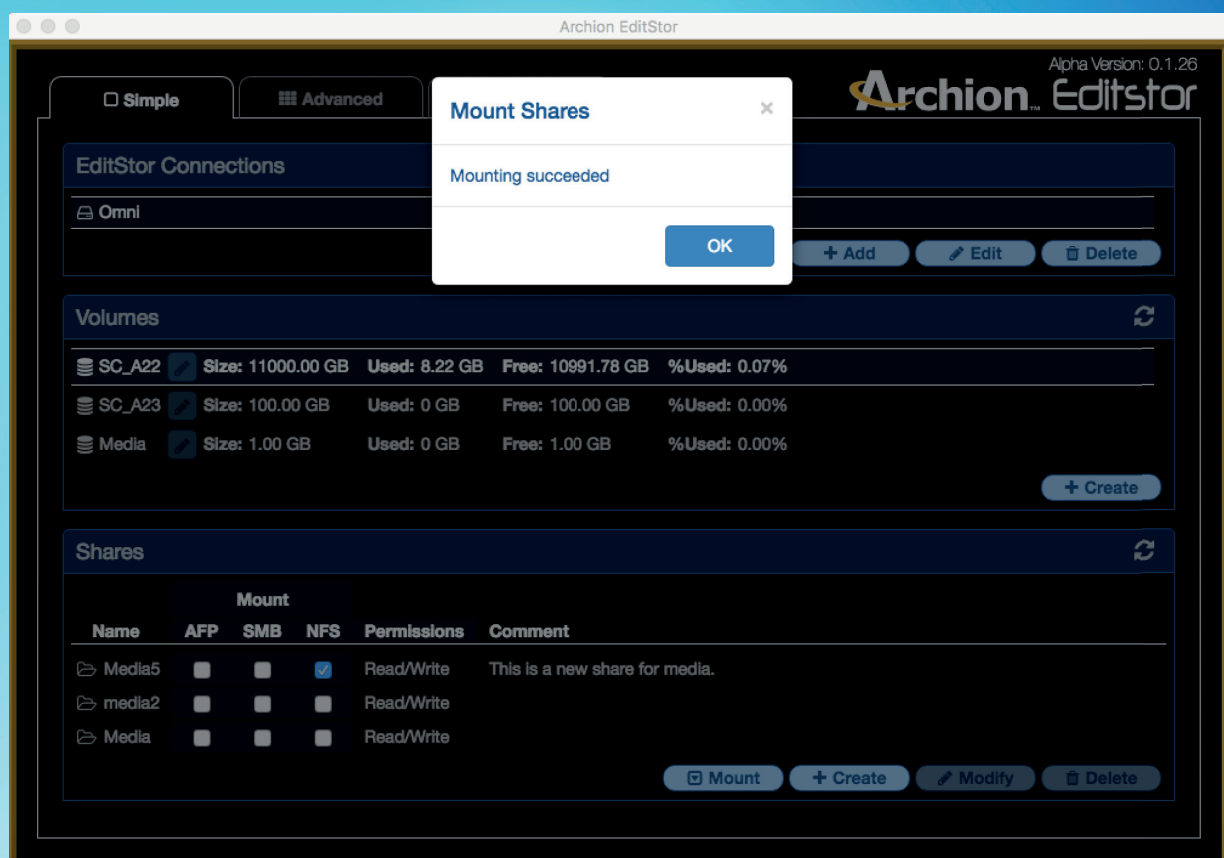
Mount+ CreateModifyDelete

## Mounting a share on the desktop

To mount a share on your desktop, click “Share,” and choose the protocol(s) with which you wish to mount the share. In the example below, “media5” will be mounted as AFP, while “media” will be mounted as both SMB and NFS. Once you’ve chosen the protocol(s) for each share, click “Mount.” When the shares have been successfully mounted, a notification will appear.







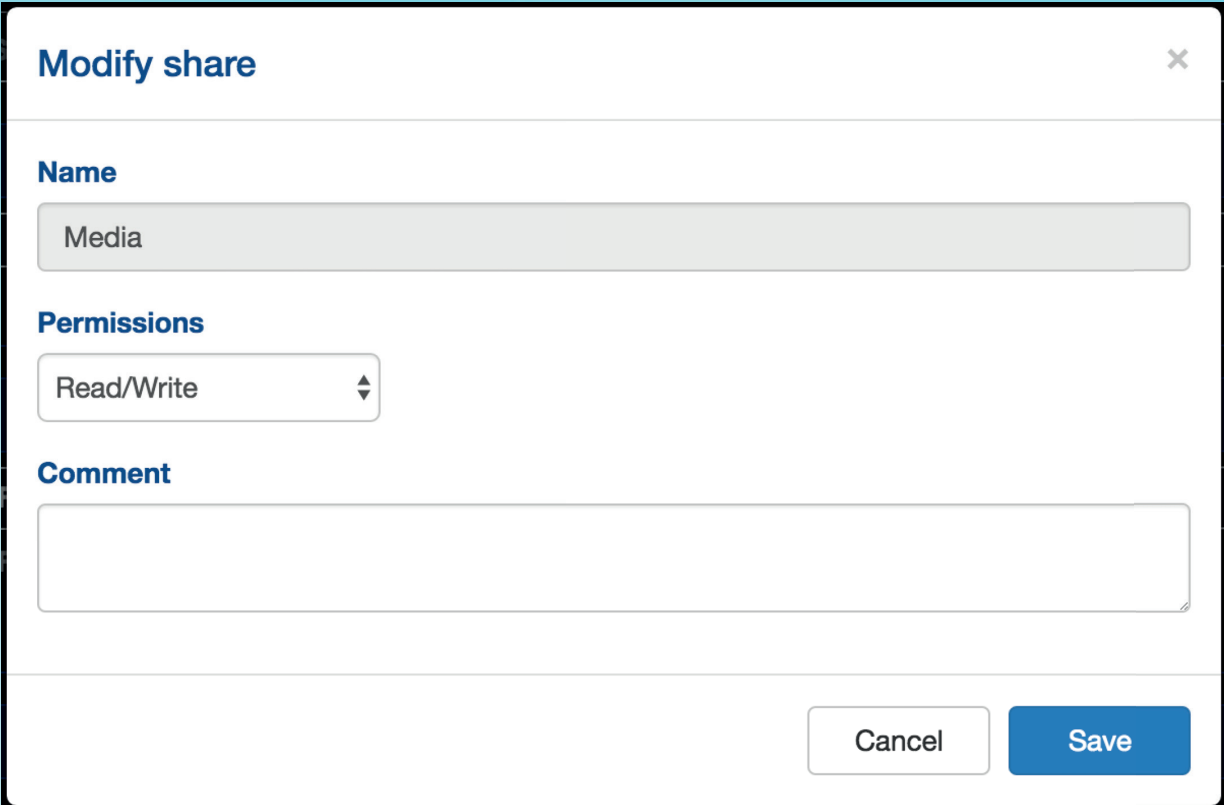
## Mount All

Each network protocol will have a “Mount all” box next to it. Check the box to mount all the shares with that specific network protocol.

## Mount across volumes

To mount across logical volumes and multiple shares, highlight one volume and hold Command + M (on Mac) or Control + M (on Windows), then click on the next logical volume. The share list will combine the shares from both volumes. You can add more logical volumes by holding Command + M (on Mac) or Control + M (on Windows). To mount shares, either check the “Mount All” box, or check the share and the network protocol, then click Mount.

## Modifying a share's properties



The image shows a 'Modify share' dialog box with a title bar containing the text 'Modify share' and a close button (X). The dialog is divided into three sections: 'Name', 'Permissions', and 'Comment'. The 'Name' section has a text input field containing 'Media'. The 'Permissions' section has a dropdown menu showing 'Read/Write'. The 'Comment' section has a large empty text area. At the bottom right, there are two buttons: 'Cancel' and 'Save'.

**Modify share** ✕

**Name**

Media

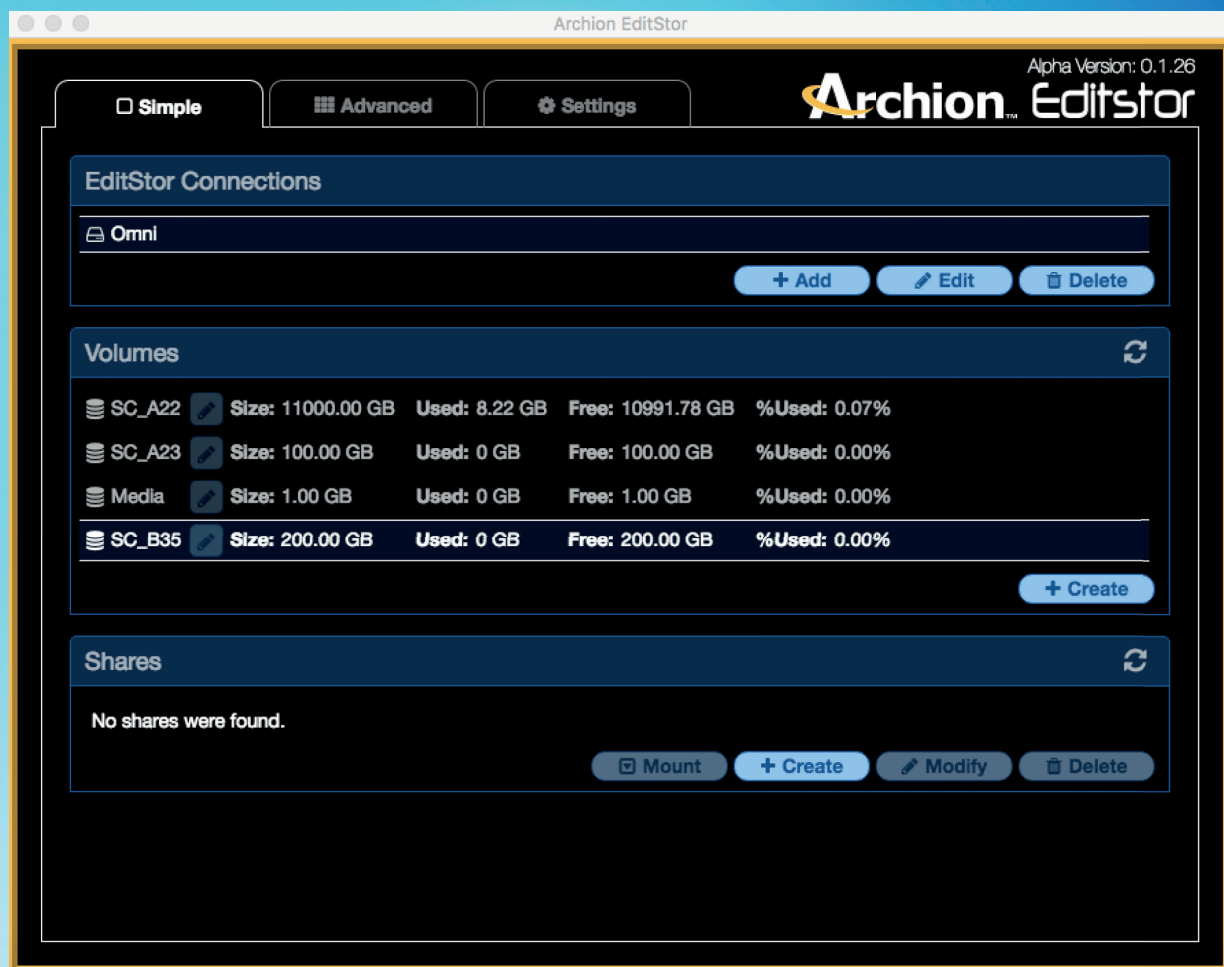
**Permissions**

Read/Write

**Comment**

Cancel Save

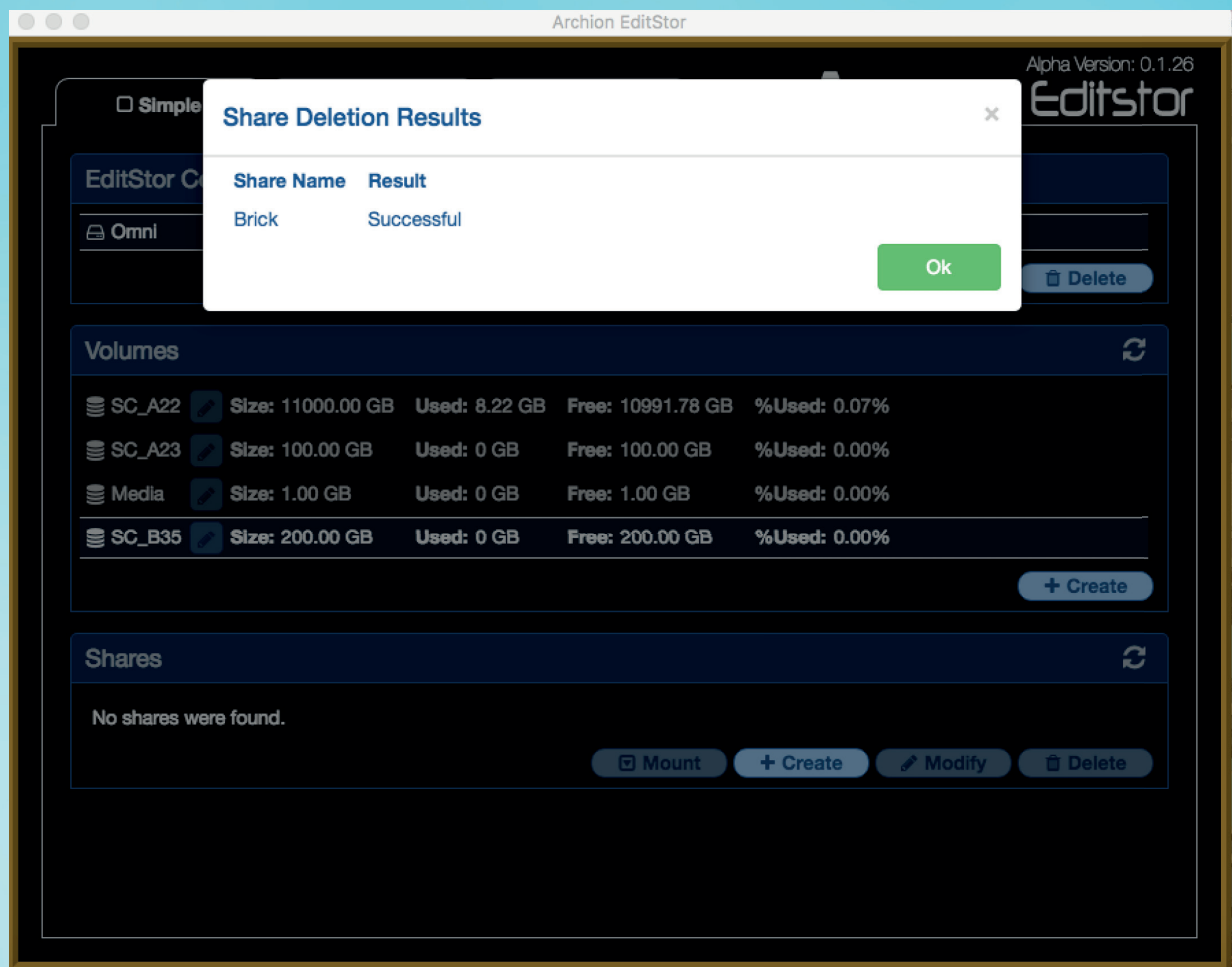
To modify a share's properties, simply click on the share to select it, then click "Modify." An "Edit share" dialog will appear. Shares can be mounted with AFP, SMB, or NFS protocol. On this dialog, you can also modify shares – giving them read or write permissions, and entering new comments. Click "Save" when finished.



## Adding shares to a logical volume

As you can see, the new logical volume "SC\_B35" has no shares yet. To add shares to a logical volume, select that volume and click "Create" in the Shares panel, then enter the information for the new share.





## Deleting a share

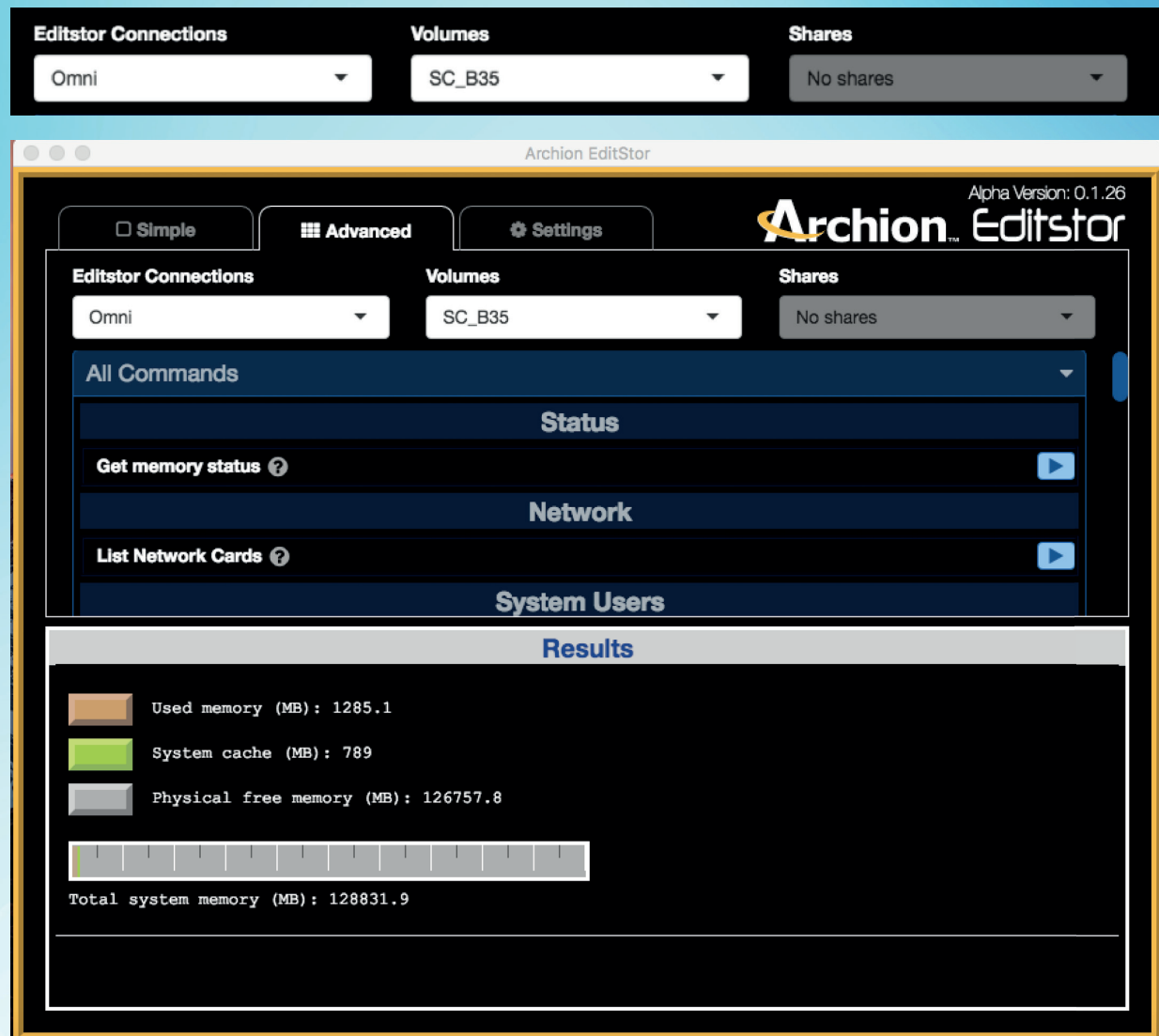
To delete a share, click the "Delete" button in the Shares panel. Enter the name of the share you wish to delete, and click "OK." A notification will appear to tell you the results of the deletion.

Deleting the share does not delete the actual files and folders in that share. It will only delete the symlink to that path's address folder.

## Advanced features

The Advanced Features tab enables you to get a more detailed look into your system, and perform advanced share creation and mounting.

Certain advanced features and functions requires an EditStor connection, logical volume, and/or shares. You can choose the EditStor connection, logical volumes, and shares by using the drop down menus for each item.



### Status panel

#### Checking system memory

Click the arrow on the right of "Get memory status" to see how much memory is available on your system. This will display the memory in the Results pane of the EditStor connection you've selected at the top of the Advanced panel.

Archion EditStor Alpha Version: 0.1.26

Simple Advanced Settings

EditStor Connections Volumes Shares

Omni SC\_B35 No shares

All Commands

Status

Get memory status ? ▶

Network

List Network Cards ? ▶

System Users

Results

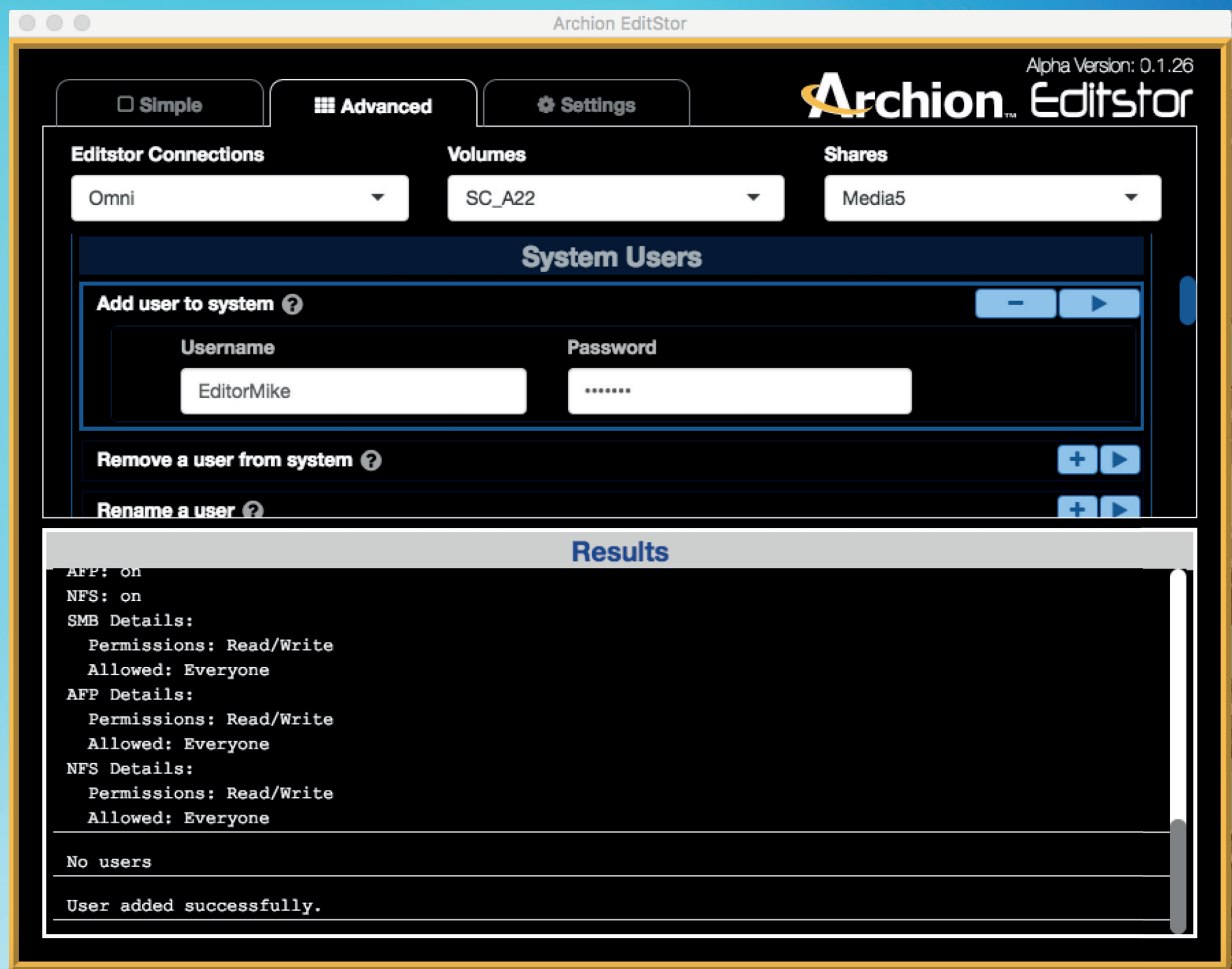
Total system memory (MB): 128831.9

Name	State	Cable	Dhcp	IP	Gateway	Broadcast	MAC
eth0	on	0	0	192.168.0.220	NONE	192.168.0.255	0c:c4:7a:88:55:6c
eth1	on	0	0	192.168.6.220	NONE	192.168.6.255	0c:c4:7a:88:55:6d
eth2	on	0	0	192.168.2.220	NONE	192.168.2.255	00:07:43:39:7a:90
eth3	on	0	0	192.168.3.220	NONE	192.168.3.255	00:07:43:39:7a:98
eth4	on	0	0	192.168.4.220	NONE	192.168.4.255	00:07:43:39:7a:a0
eth5	on	0	0	192.168.5.220	NONE	192.168.5.255	00:07:43:39:7a:a8
eth6	on	1	0	192.168.2.227	NONE	192.168.2.255	0c:c4:7a:88:55:6e
eth7	on	0	0	192.168.7.220	NONE	192.168.7.255	0c:c4:7a:88:55:6f
eth8	on	1	0	192.168.8.220	NONE	192.168.8.255	3c:fd:fe:a2:7c:78
eth9	on	0	0	192.168.9.220	NONE	192.168.9.255	3c:fd:fe:a2:7c:79

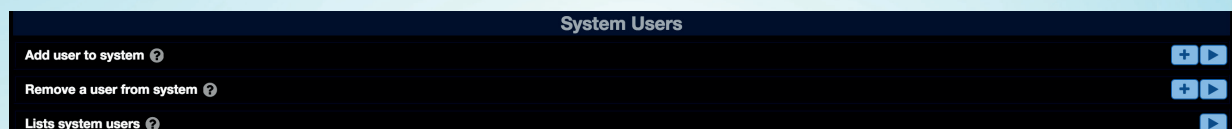
## Network Panel

### Examining network cards

Click the arrow to the right of “List network cards” to see a display of all your system’s network interface cards – including the status of each card, whether a cable is plugged into it, whether it’s using DHCP, its IP address, its gateway, its broadcast IP, and its Mac address. The Results pane will display the list of network adapters for the EditStor connection you’ve selected at the top of the Advanced panel.



## System Users Panel



### Add user to system/Remove a user from system

On the System Users panel, you can add and remove users. To add a user to the system, click the "+" sign under "Add user to system," then enter the username and password, and click the right arrow button. The user will be added, and their read and write permissions will be displayed.

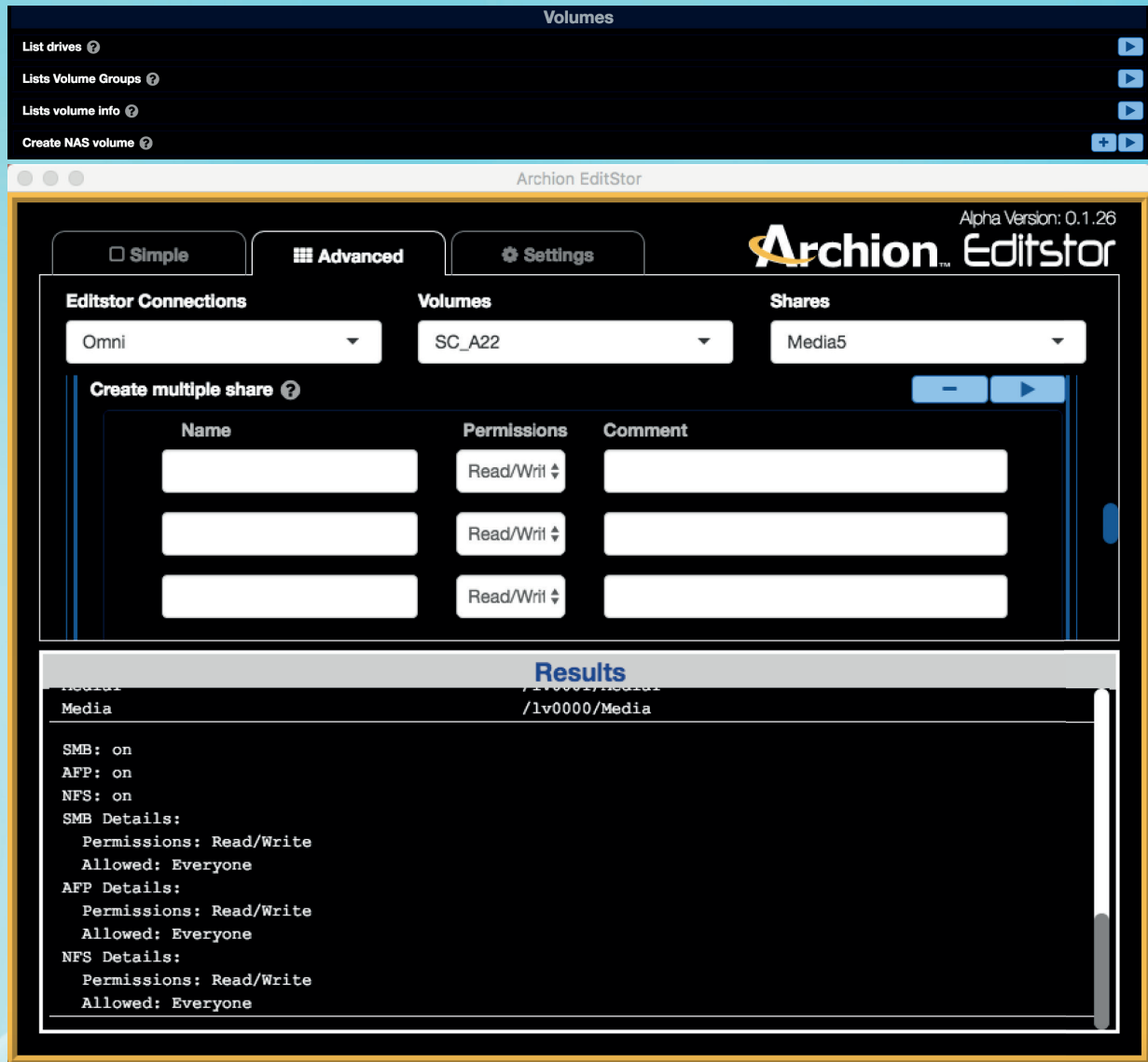
To remove a user, click the "+" sign to the right of "Remove a user from system." Enter the username in the username box, then click the right arrow to remove that user.

### List all system users

Click the right arrow to display all users in the result box.



## The Volumes Panel



### List drives

Click the right arrow to show the list of drives in the Results box.

### Lists Volume Groups

Click the right arrow to show the list of volume groups in the Results box.

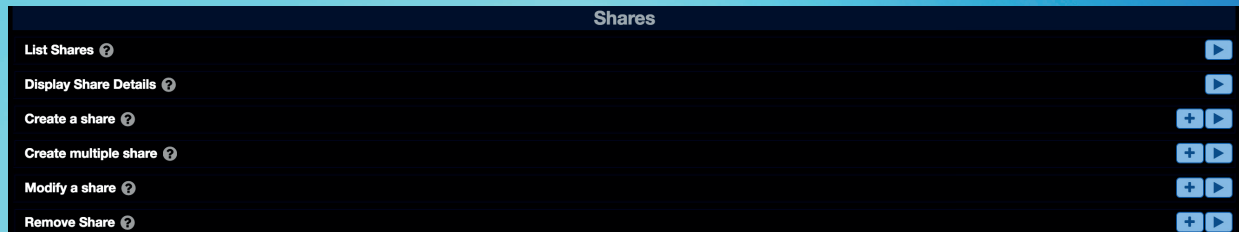
### List volume info

Click the right arrow to show the list of logical volumes in the Results box.

### Create NAS volume

Click the "+" sign to the right of "Create NAS volume". Enter the Name of the new volume, select the volume group, enter the size of the volume, and choose the size type. Then click the right arrow to create the new volume.

## Share Panel

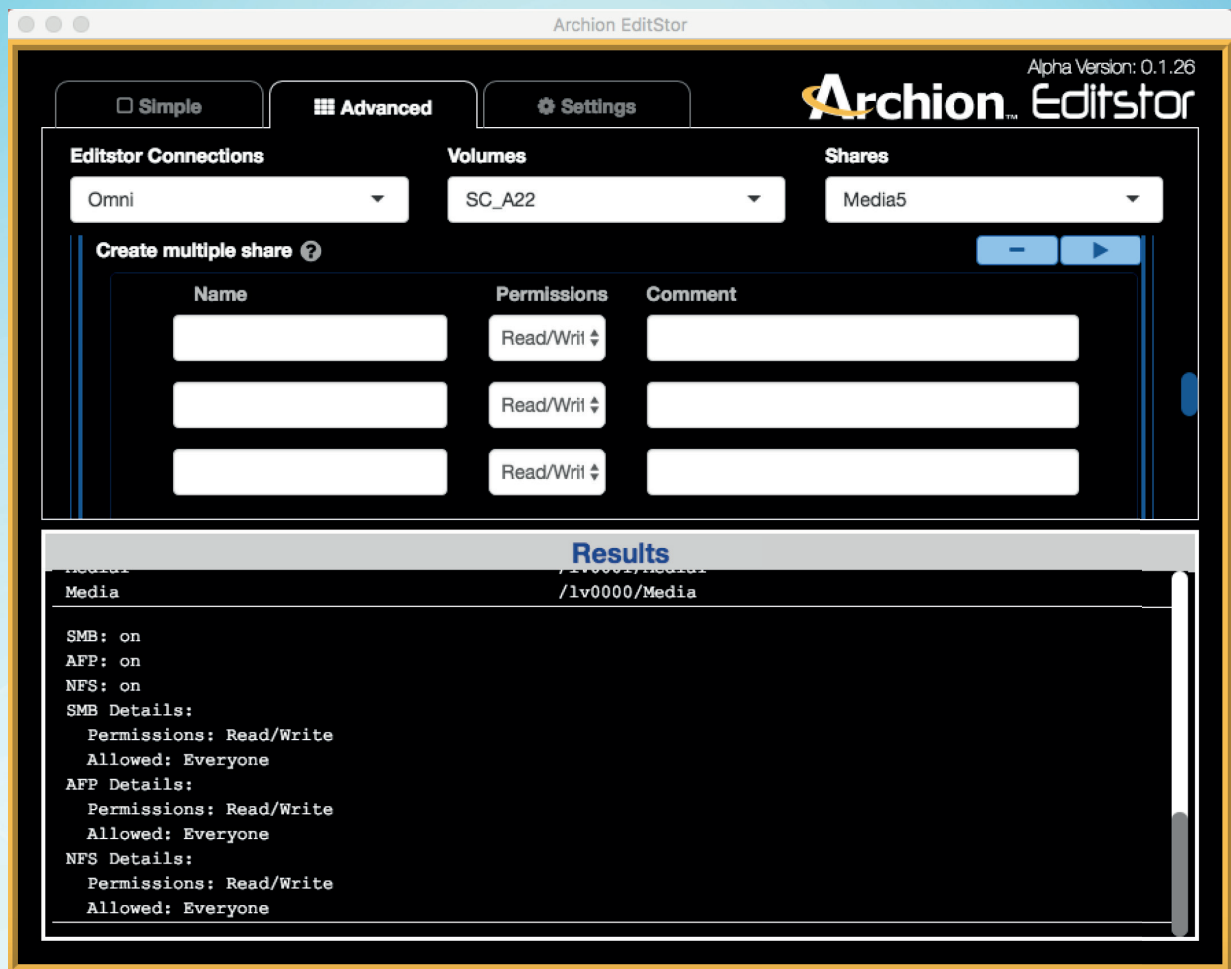


### List shares

Click the right arrow to display the list of shares in the Results window.

### Display share details

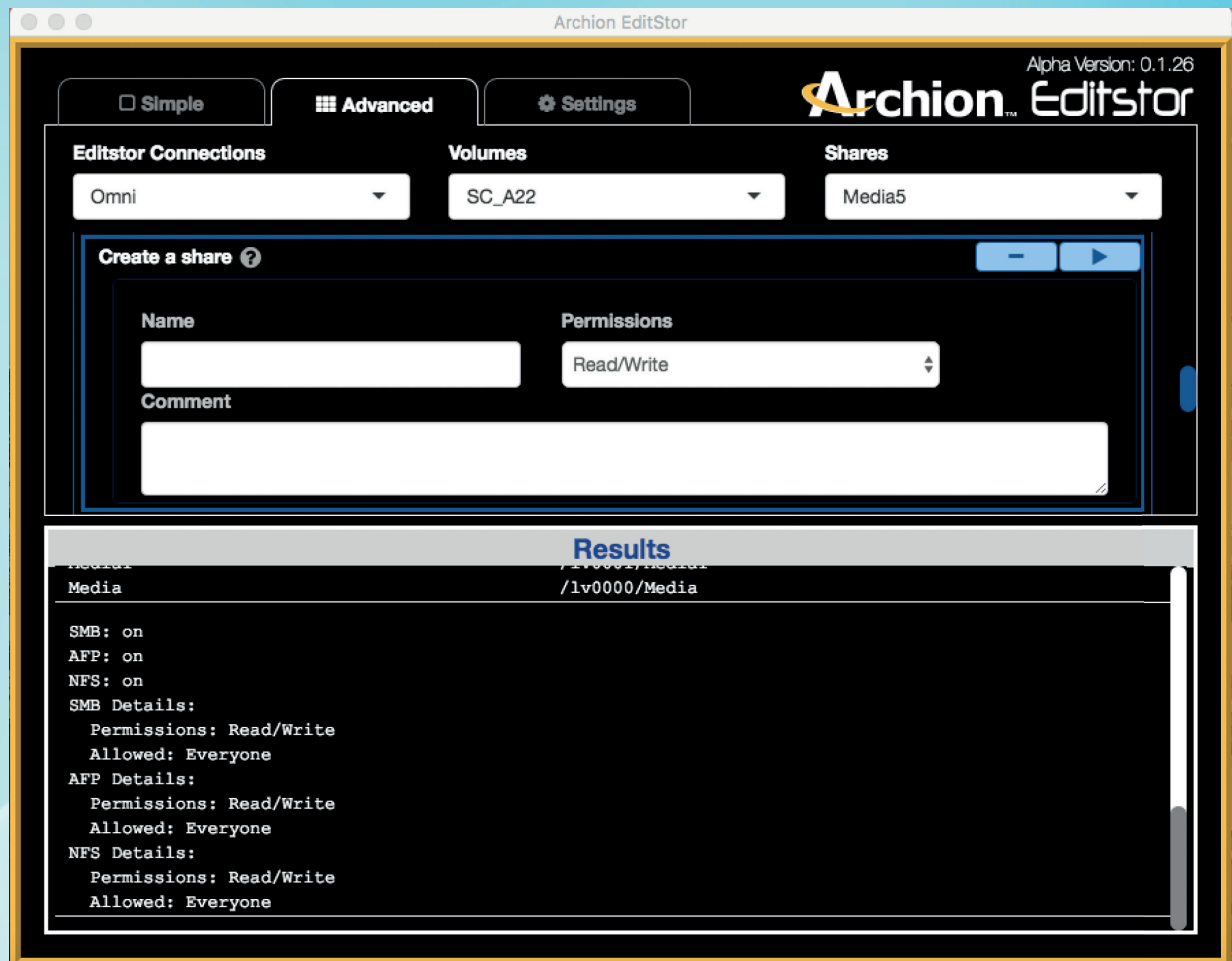
Click the right arrow to display the details of the share you've selected at the top of the Advanced panel.



## Creating multiple shares

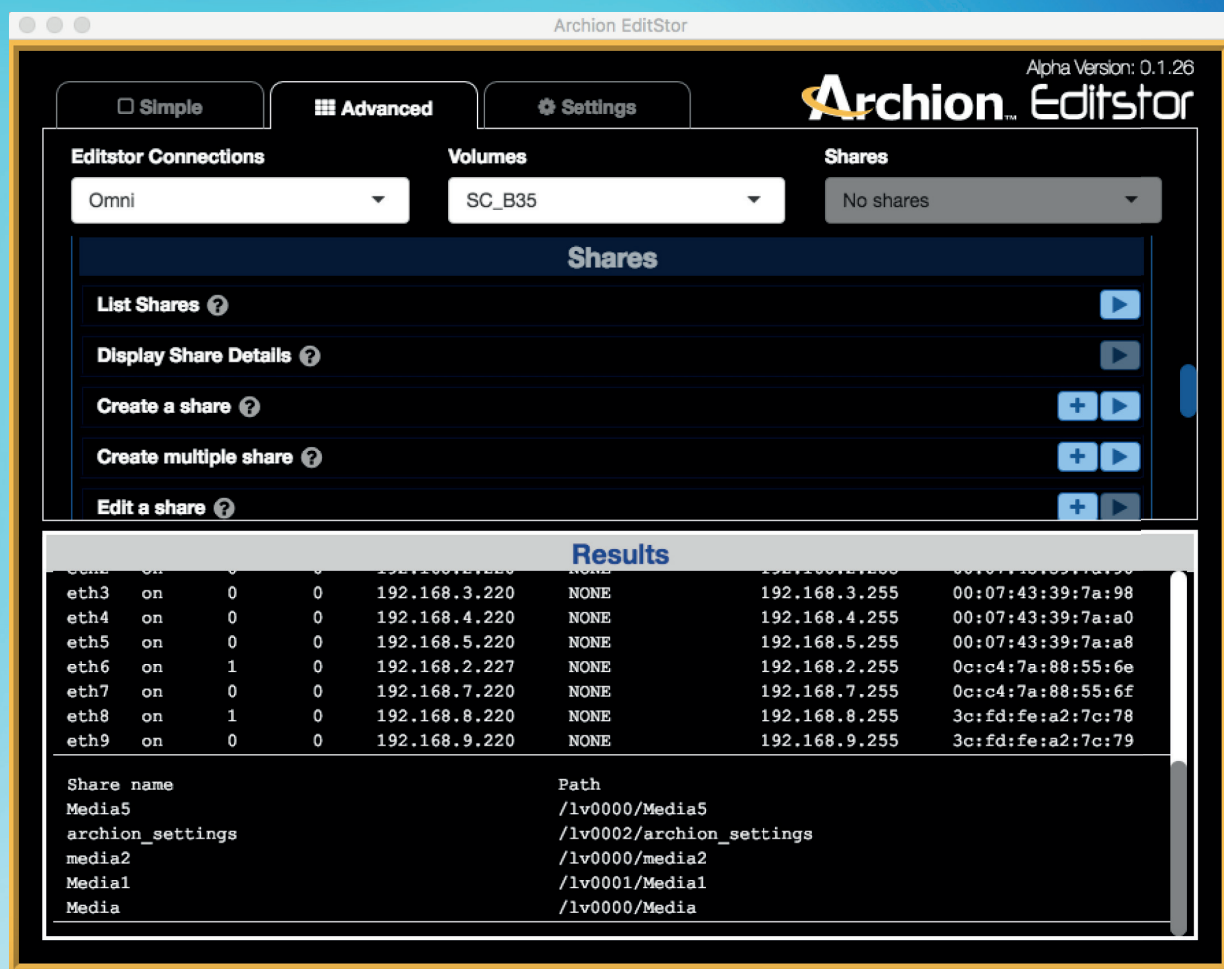
To create multiple shares, click “Multiple share creation” on the Shares panel. Enter the names of the shares, their permissions, and any comments. Then click the right arrow to create all three shares.

If you wish to create more than three shares, fill in the info for the first three shares, click the arrow, then add more shares and click the right arrow again to create them. The shares created will be stored under the path of the logical volume you’ve selected at the top of the Advanced Panel.



## Creating a share from the Advanced panel

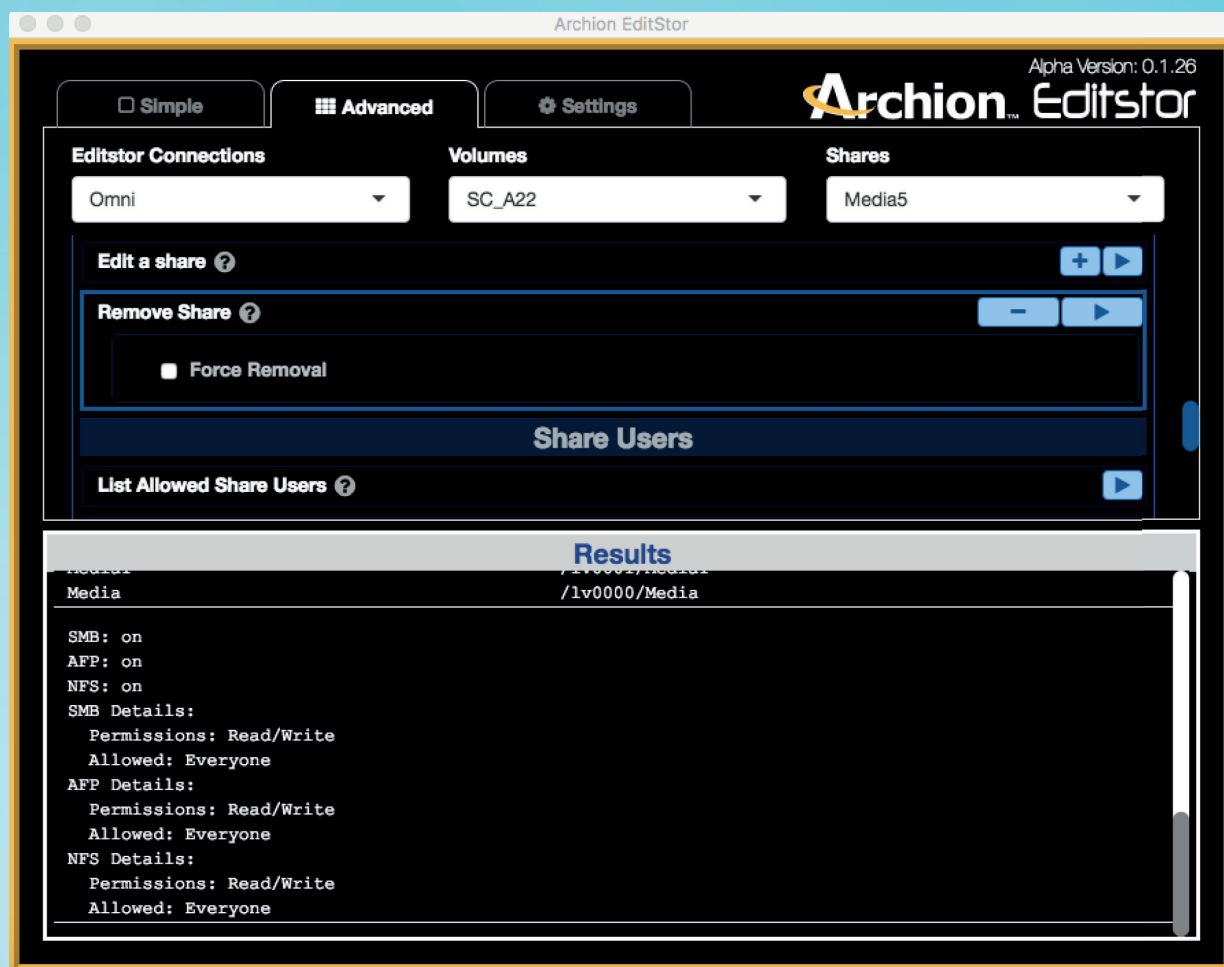
To create a share from the Advanced panel, click the “+” sign to open the “Create a share” panel. Enter the name of the share, its permissions, and any comments. Then click the right arrow to create the share. The share will be stored under the path of the logical volume you’ve selected at the top of the Advanced Panel.



## Get a list of all created shares

To get a list of all shares that have already been created, click the right arrow next to the "List shares" entry. A list of shares will be displayed at the bottom of the Results pane.





## Modify a share

To modify a share, go to the Share panel and click the "+" sign on the right to open the "Modify a share" pane. Use the drop-down menu to select the share's permissions, and enter comments in the Comment box. Click the arrow on the right to apply the changes to the share.

## Removing a share

To remove a share, go to the Share panel and click the "+" sign on the right to open the "Remove share" pane. Use the drop-down at the top of the Advanced panel to select the share to be removed, click "Force removal," then click the arrow on the right to remove the share.

## Shares Users Panel



## List allowed share users

Click the right arrow to show the list of all allowed share users for the share you've selected at the top of the Advanced panel.

## Add allowed user to share

This will add users to the share you've selected at the top of the Advanced panel. Click the '+' sign to open the "Add allowed user to share" pane. Enter the names of the users you wish to add to the share under in the user box. For multiple users, simply add a comma between the names.

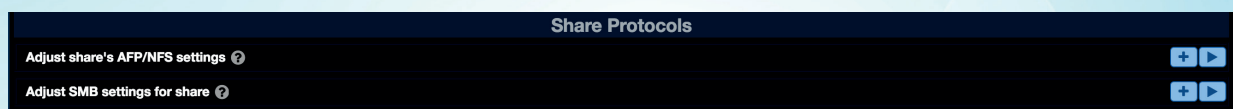
## Set allowed share users

This will replace the current list of users for the share you've selected at the top of the Advanced panel. Click the '+' sign to open the "Set allowed share users" pane. Enter the names of users you wish to add, who will replace the current list of allowed users for that share. For multiple users, add a comma between the names.

## Remove allowed users

This will remove users from the share you've selected at the top of the Advanced panel. Click the '+' sign to open the "Remove allowed users" pane. Enter the names of the users you wish to remove. For multiple users, add a comma between the names.

## Share Protocols Panel



## Adjust a share's AFP/NFS settings

Click the '+' sign to open the "Adjust share's AFP/NFS settings" pane. If you want to add AFP and NFS protocols to a share, select that share at the top of the Advanced panel, then change the share's access type to AFP protocol by checking "Guest" or "User," then choose the permission for AFP protocol for the share. "Read/Write" is unchecked by default. Check to switch to Read Only permission.

## Adjust SMB settings for a share

Click the '+' sign to open the "Adjust SMB settings for share" pane. Choose the access type for SMB protocol for the share by checking Guest or User. Choose the permission for SMB protocol for the share. "Read/Write" is unchecked by default. Check to switch to Read Only permission.